



TTS Technology

Thermal cut-out + Thermostat



Overheat protection

With the liquid expansion thermostat, when the heating pipe continues to heat the water to or above 97°C, the thermostat will automatically power off to protect the machine and extend the service life

*The protection will not be automatically recovered and the water can be reheated after manual recovery



Precise temperature control

The inner tank blind hole makes the temperature measurement more precise; once the water is heated to the preset temperature, the heat process is immediately stopped, reacting quicker and saving more energy and electricity

Liquid expansion thermostat

Monitor the temperature by physical principles without being affected by electric circuits; go deep into the inner tank to sense the temperature in a quicker, safer and more reliable way



VS

Electronic wall-mounted thermostat



Slow reaction and low reliability of electronic components, easy to cause safety hazards

• Magnesium Rod

Magnesium material anode rod to prevent corrosion and has no peculiar smell; special stainless steel inner core to ensure no breakage and more durable.



Magnesium Rod
Weights $\geq 200\text{g/m}^3$

• Inner Tank

Tough UMC Inner Tank

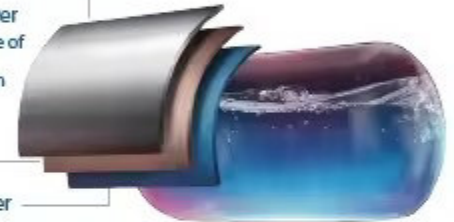
Only water heater with Ultra Micro Coating tank, conforms to the Germany DIN Standard, extra thick special steel sheet for longer life.

It is proved to pass 160,000 times of impulse test.

Decarbonized Layer
Pressure and explosion resistance

Adhesive Layer
Reduce the rate of
expansion
and contraction

Enamel Layer
Anti-corrosion and anti-rust



COMFORTABLE

• U-Turn Flow Technology

Unique U-type water inlet method, it will not cause invisible dead water after the water in the bottom of the gallbladder without flowing like ordinary water heaters. Enhance bottom water mobility, prevent stagnant water deposits, keep your bath water fresh.



- **Patented Shock Proof Technology**
Safe as Unplugged

By physically converting the rated voltage lower to the safe voltage, it's the unique water heater that ensures this machine

safety under the following conditions:

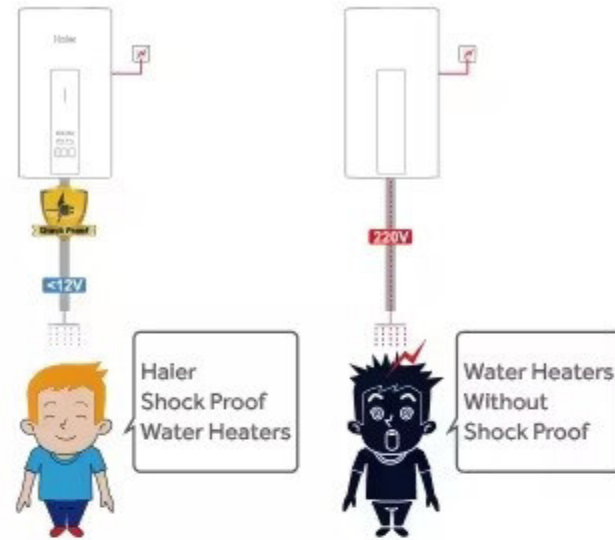
- ✓ No earthing cases
- ✓ Faulty earthing cases
- ✓ All electric leakage from the water heater

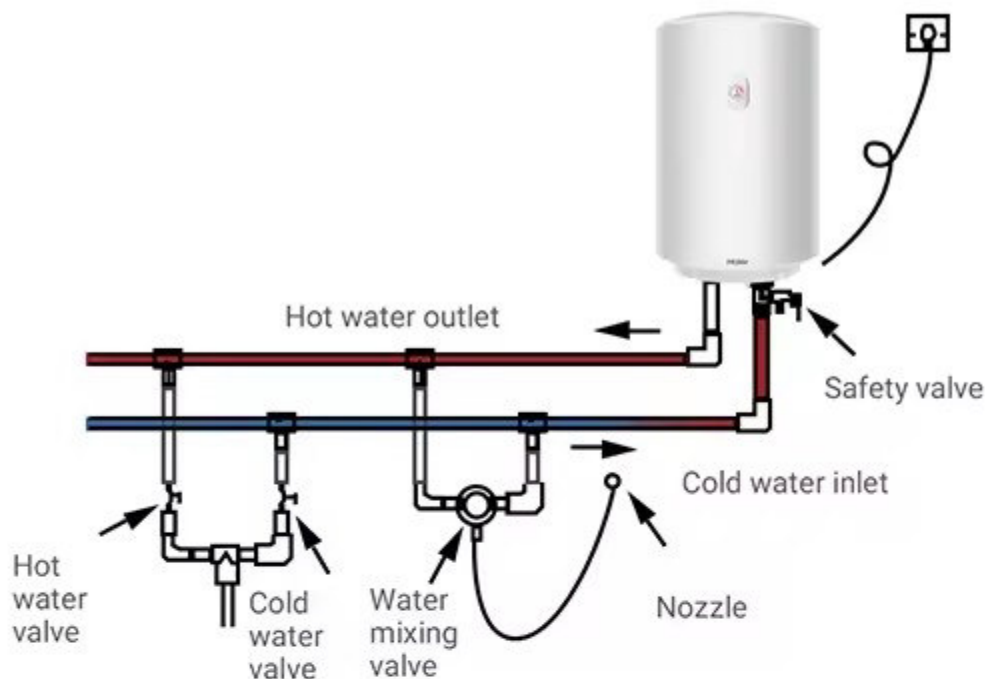
- **Mo Incoloy Heating Element**

The anti-corrosion performance of Mo incoloy heating element increased by 100% comparing with stainless steel material.

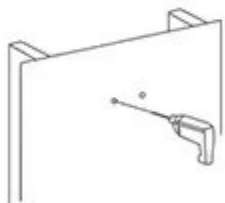
- **Mo+ heating element**

310S Mo+ heating element whose corrosion resistance will be 4 times than normal stainless steel heating element (316L stainless steel)





1



Check whether hanger existing on the wall. If not exist, please drill the holes to install hanger; If exist, please check the stability and install new hanger if need to change

2



General bracket is compatible with 190mm-270mm space

3



Please put up and down gently to prevent damage and hurt

4



Hang the water heater directly on the hanger on the wall

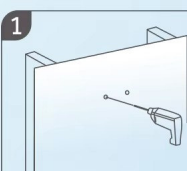
5

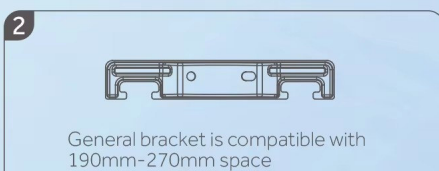


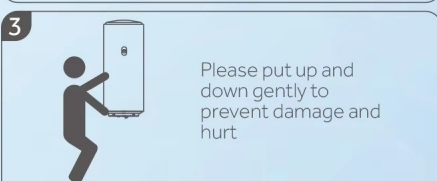
Shock proof by physically converting the rated voltage lower to the safe voltage which will simplify the installation procedure and not necessary to install dielectric joints


Installation Instructions

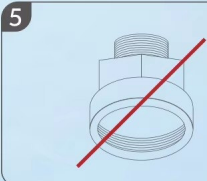
Can be installed and used directly,
there is no requirement for the location of the installation.

- 

1 Check whether hanger existing on the wall. If not exist, please drill the holes to install hanger; If exist, please check the stability and install new hanger if need to change
- 

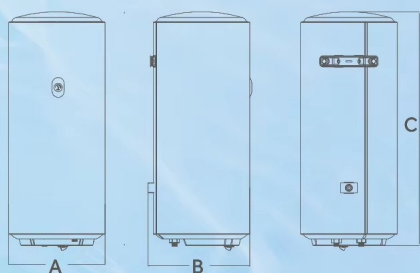
2 General bracket is compatible with 190mm-270mm space
- 

3 Please put up and down gently to prevent damage and hurt
- 

4 Hang the water heater directly on the hanger on the wall
- 

5 Shock proof by physically converting the rated voltage lower to the safe voltage which will simplify the installation procedure and not necessary to install dielectric joints

Technical Parameter



Model	A	B	C
ES30V-A3	390mm	400mm	447mm
ES50V-A3	390mm	415mm	650mm
ES80V-A3	390mm	400mm	930mm
ES100V-A3	390mm	415mm	1158mm

TTS* TECHNOLOGY

Thermal Cut-out & Thermostat System

Overheat protection

With the liquid expansion thermostat, when the heating pipe too or above 97°C, the thermostat will automatically power off.

Precise temperature control

Once the water is heated to the preset temperature, the heat process is immediately stopped.



Liquid expansion thermostat

Monitor the temperature by physical principles without being affected by electric circuits; go deep into the inner tank to sense the temperature in a quicker, safer and more reliable way



VS

Electronic wall-mounted thermostat

Slow reaction and low reliability of electronic components, easy to cause safety hazards





ES30/50/80/100V-A3



Shock Proof



Mo+ Incoloy
Heating Element



Water Temperature
Indicator



UMC Tank



U-Turn Flow
Technology

Model	ES30V-A3	ES50V-A3	ES80V-A3	ES100V-A3
Installation type	Vertical	Vertical	Vertical	Vertical
Control method	Mechanical	Mechanical	Mechanical	Mechanical
Tank volume (L)	30	50	80	100
Rated voltage (V) / Frequency (Hz)	220-240V/50Hz	220-240V/50Hz	220-240V/50Hz	220-240V/50Hz
Rated power (kW)	1.5	1.5	1.5	1.5
Rated temperature (°C)	75	75	75	75
Rated pressure (Bar)	8	8	8	8
Tap water pressure (Bar)	≥0.5	≥0.5	≥0.5	≥0.5
Water-proof grade	IPX4	IPX4	IPX4	IPX4
Rated pressure (MPa)	0.8	0.8	0.8	0.8
Product dimensions H/W/D (mm)	390*400*447	390*400*650	390*400*930	390*400*1160
Packing dimensions H/W/D (mm)	463*447*479	463*447*654	463*447*654	463*447*1177
Net weight (kg)	12	17	24	30
Gross weight (kg)	15	19	27	33
Load qty. 40HQ	610	473	314	266

U-Turn Flow Technology

More Fresh Shower

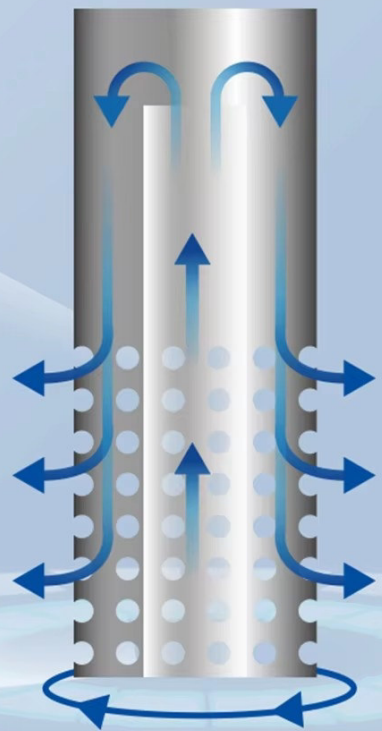
Uniformly mixed cold and hot water increases the water output, raises the output rate by 24%, and brings a more pleasant bathing experience with a large amount of water.

The cold water is firstly injected via inner side pipelines in an enclosed way and then outputted by 360° evenly passing through 116 small holes via outer side pipelines in a distributed way.

Water Plus
24%



116
pcs.



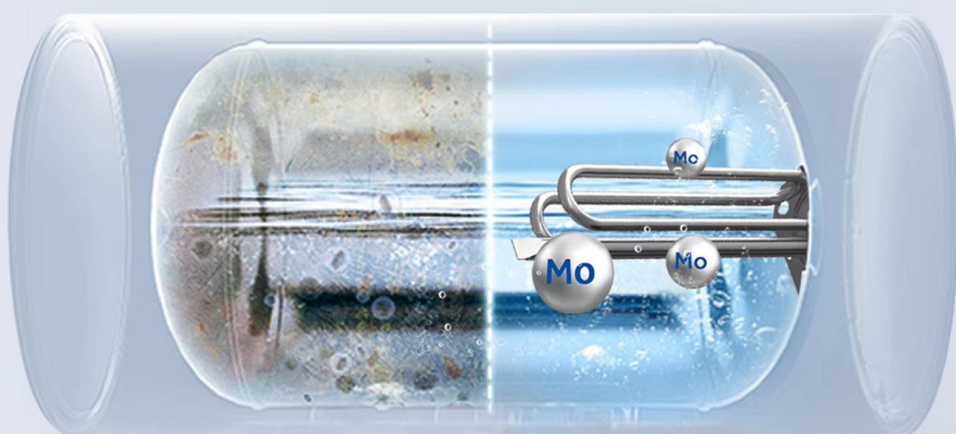
Mo+ Heating Element

High anti-corrosion Mo alloy coating

310s Mo+ Heating Element Whose Corrosion Resistance Will Be 4 Times Than Normal Stainless Steel Heating Element (316L Stainless Steel)

Regular Heating Element

Mo+ Heating Element



Anti-corrosion performance of heating elements

Mo Incoloy Heating Element

4X Anticorrosion

The anti-corrosion performance of Mo incoloy heating element increased by 100% comparing with stainless steel material.



Mo, Cr, Ni, Ti and other rare metal elements are added to ensure the high anti-corrosion performance



Including pipe welding and multistage electrical performance inspection ensure the high-precise machining



Isolate oxygen to avoid oxidation corrosion

Super Enamel Tank

Titanium Coating Tank Secures Premium Quality

Anti-corrosion and anti-scaling enamel powder doubles the durability, 160000times pressure-bearing



01 Decarbonized Layer
Pressure and explosion resistance

02 Adhesive Layer
Reduce the rate of expansion and contraction

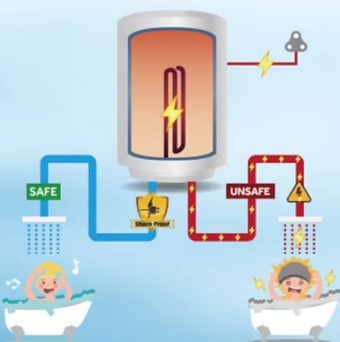
03 Enamel Layer
Anti-corrosion and anti-rust



Patented Shock Proof Technology

Safe as Unplugged

By physically converting the rated voltage lower to the safe voltage, it's the unique water heater that ensures this machine safety under the following conditions:



- No earthing cases
- Faulty earthing cases
- All electric leakage from the water heater

Wide Application

Unlock different modes a variety of bath needs in one step

Kitchen

Warm wash
Care for hands



Bathroom

Free wash
No waiting



Laundry

Volume of water
Feel at ease



RV

Intelligent regulation
More economical

