



ES10V-Q1



Shock Proof



ABS Body



Super Enamel
Tank



U-turn Flow
Technology



Incoloy
Heating Element

Model

ES10V-Q1

Installation type

Above Sink

Control method

Mechanical

Rated voltage (V) / Frequency (Hz)

220-240V/50Hz

Rated power (kW)

1.65

Rated temperature (°C)

75

Rated pressure (Bar)

7.5

Tap water pressure (MPa)

≥0.05

Water-proof grade

IPX4

Rated pressure (MPa)

0.75

Product dimensions H/W/D (mm)

350*350*270

Packing dimensions H/W/D (mm)

416*336*462

Net weight (kg)

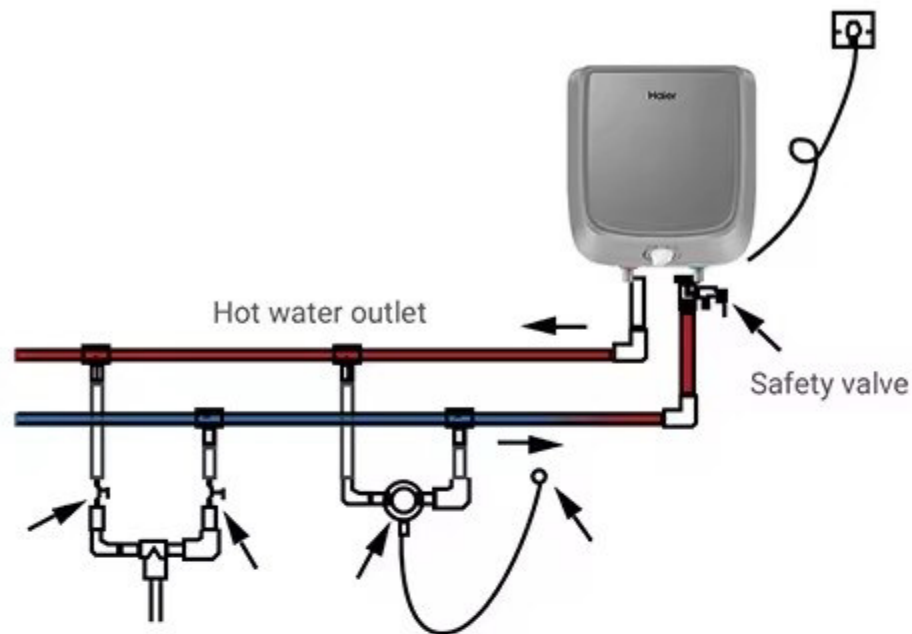
8

Gross weight (kg)

10

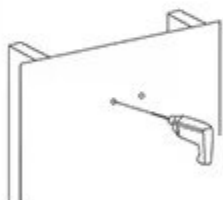
Rated pressure (MPa)

1100



Easy Installation

1



Check whether hanger existing on the wall.
If not exist, please drill the holes to install hanger;
If exist, please check the stability and install new hanger if need to change

2



General bracket is compatible with 190mm-270mm space

3



Please put up and down gently to prevent damage and hurt

4



Hang the water heater directly on the hanger on the wall

5



Shock proof by physically converting the rated voltage lower to the safe voltage which will simplify the installation procedure and not necessary to install dielectric joints

- **Patented Shock Proof Technology**
Safe as Unplugged

By physically converting the rated voltage lower to the safe voltage, it's the unique water heater that ensures this machine

safety under the following conditions:

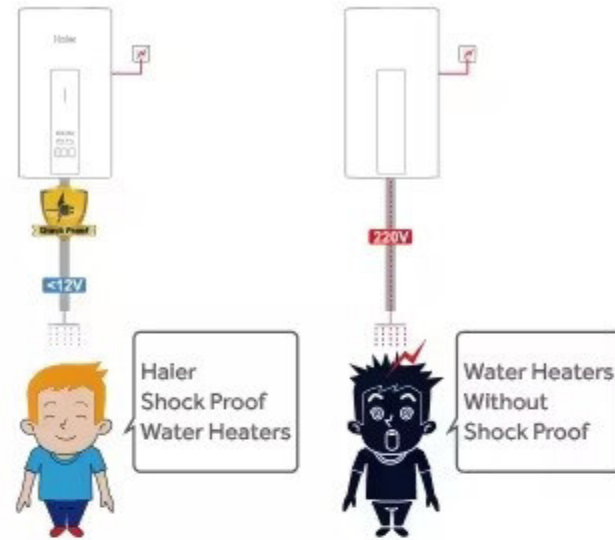
- ✓ No earthing cases
- ✓ Faulty earthing cases
- ✓ All electric leakage from the water heater

- **Mo Incoloy Heating Element**

The anti-corrosion performance of Mo incoloy heating element increased by 100% comparing with stainless steel material.

- **Mo+ heating element**

310S Mo+ heating element whose corrosion resistance will be 4 times than normal stainless steel heating element (316L stainless steel)



• Magnesium Rod

Magnesium material anode rod to prevent corrosion and has no peculiar smell; special stainless steel inner core to ensure no breakage and more durable.



Magnesium Rod
Weights $\geq 200\text{g/m}^3$

• Inner Tank

Tough UMC Inner Tank

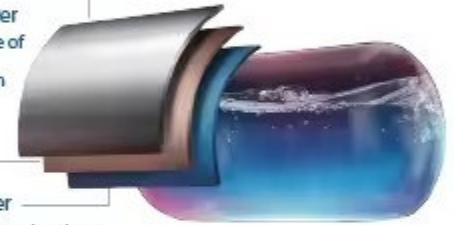
Only water heater with Ultra Micro Coating tank, conforms to the Germany DIN Standard, extra thick special steel sheet for longer life.

It is proved to pass 160,000 times of impulse test.

Decarbonized Layer
Pressure and explosion resistance

Adhesive Layer
Reduce the rate of
expansion
and contraction

Enamel Layer
Anti-corrosion and anti-rust



COMFORTABLE

• U-Turn Flow Technology

Unique U-type water inlet method, it will not cause invisible dead water after the water in the bottom of the gallbladder without flowing like ordinary water heaters. Enhance bottom water mobility, prevent stagnant water deposits, keep your bath water fresh.





TTS Technology

Thermal cut-out + Thermostat



Overheat protection

With the liquid expansion thermostat, when the heating pipe continues to heat the water to or above 97°C, the thermostat will automatically power off to protect the machine and extend the service life

*The protection will not be automatically recovered and the water can be reheated after manual recovery



Precise temperature control

The inner tank blind hole makes the temperature measurement more precise; once the water is heated to the preset temperature, the heat process is immediately stopped, reacting quicker and saving more energy and electricity

Liquid expansion thermostat

Monitor the temperature by physical principles without being affected by electric circuits; go deep into the inner tank to sense the temperature in a quicker, safer and more reliable way



Electronic wall-mounted thermostat



Slow reaction and low reliability of electronic components, easy to cause safety hazards

